

Agilent Medalist 5DX

Limited Access Operator Menu Setup for 8.3

Application Note

Background:

Starting with 8.3, the user interface menu has changed. Due to these changes, the current limited access menu setup will not be compatible with the 8.3 user interface. All logins will remain the same, the limited menu settings are lost. Prior to the installation of 8.3, review the current limited access settings that you have set up. This can be done by logging onto the 5DX as a limited access user and identifying which selections are not accessible to the user. Record these settings on a piece of paper. Once 8.3 is installed, follow the steps below to reset the limited access menu items to the previous settings.

Limited Access Configuration menu:

1. From the 5DX user interface, exit to the DOS prompt.
2. At the DOS prompt, type and run the following: `bldopmnu`

- This will open the utility to setup the limited access menu setup utility. In this utility, highlight the menu item you do not want users to have access to and press F2. This will place an "*" next to each item which you have removed access to from the limited access operator login.

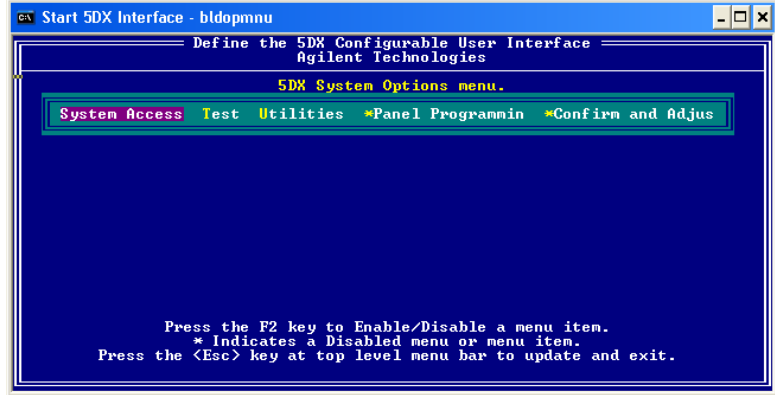


Image 1: BLDOPMNU interface

- Once complete selecting access removal for the menu items, press the ESC button to save and exit. The changes are saved to a file called "OPERATOR.MNU"

Limited Access Login Setup:

With the 8.3 upgrade, the login names will not be lost. The file USRIDS.DAT which contain the login names are copied forward. Though, to ensure you have the proper logins setup or that you need to setup further login names, please use the following steps:

- In the 5DX UI, select configure, register user



Image 2: Main User Interface Register User Path

6. The USERIDS.DAT text file will open in a text editor. In this editor, enter the users name and then "MENU". MENU will setup that login to be used for the limited access operator interface that was setup with BLDOPMNU. For example, to setup the login jeremy for the limited access menu, enter the following into USERIDS.DAT: jeremy MENU.
7. Save USERIDS.DAT and then close the file. This will return you back to the 5DX User Interface.

Using the limited access login

8. Logout from the 5DX user interface and then log back into the interface using a limited access login name.
9. The user interface should now have only access to the selections that you made available from BLDOPMNU. The areas which don't have access should be grayed out on the menu.

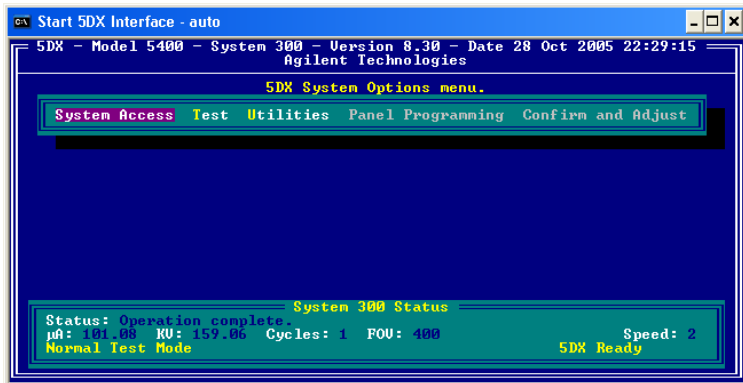


Image 3: Limited access menu example

10. If you see a section which needs to be removed, go back to configure menu to remove or add access

For further information regarding this release and all 5DX content, please visit the following website: <http://www.agilent.com/see/5DX>

This information is subject to change without notice.
© Agilent Technologies, Inc. 2006